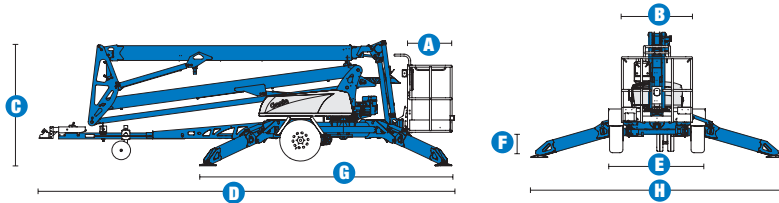


# Specifications



**MODEL** **TZ™-50**

MEASUREMENTS	Metric	US
Working height*	17.09 m	55 ft 6 in
Platform height	15.09 m	49 ft 6 in
Entry height	51 cm	1 ft 8 in
Horizontal reach	8.89 m	29 ft 2 in
Clear outreach	7.04 m	23 ft 1 in
Up-and-over clearance	6.71 m	22 ft
<b>A</b> Platform length	68 cm	2 ft 2.8 in
<b>B</b> Platform width	1.12 m	3 ft 8 in
<b>C</b> Height - stowed	2 m	6 ft 10 in
<b>D</b> Length - stowed	7.16 m	23 ft 6 in
<b>E</b> Width - stowed	1.68 m	5 ft 6 in
<b>F</b> Ground clearance - centre	25 cm	10 in
<b>G</b> Length - outrigger footprint	4.37 m	14 ft 4 in
<b>H</b> Width - outrigger footprint	4.37 m	14 ft 4 in

**PRODUCTIVITY**

Lift capacity - standard	200 kg	440 lbs
Lift capacity - rotating platform	200 kg	440 lbs
Jib boom	1.25 m	4 ft 1 in
Jib working range	135°	135°
Self levelling platform	2.5° standard	2.5° standard
Platform rotation option	160° hydraulic	160° hydraulic
AC power to platform	standard	standard
Turntable rotation	359° non-continuous	
Outrigger levelling capability	10°	10°
Drive speed	1.37 km/h	0.85 mph
Towing speed rate	97 km/h	60 mph
Tongue weight***	100 kg	220 lbs
Surge and parking brakes	standard	standard
Controls	variable speed system	
Tyres	215 R14C	215 R14C
Coupler	50 mm ball coupler	

**POWER**

Power source - standard	24 V DC (four 6 V 225 Ah batteries)	
Power source - drive option	24 V DC (four 6 V 244 Ah batteries)	
Power source - option	Hybrid DC/Petrol Honda 5.5 hp (4.1 kW)	
Fuel tank capacity	3.6 L	0.95 gal
Hydraulic tank capacity	18 L	4.75 gal
Hydraulic system capacity	30 L	8.0 gal

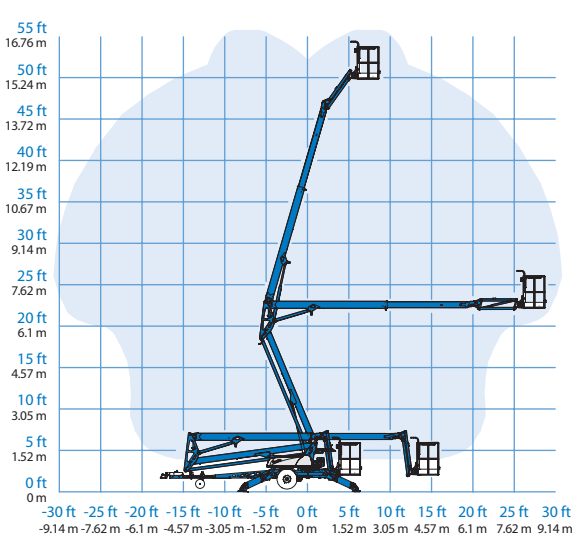
**WEIGHT\*\*\*\***

Unit weight modifiers for main options	2,025 kg	4,464 lbs
	Platform rotation: add 10 kg (23 lbs)	
	Drive option: add 105 kg (231 lbs)	
	Bicycle guard: add 15 kg (32 lbs)	
	Full size spare tyre: add 27 kg (60 lbs)	
	Hybrid engine: add 45 kg (100 lbs)	

**STANDARDS COMPLIANCE**

CE EN280, PB-10-611-03

**RANGE OF MOTION TZ™-50**



\* The metric equivalent of working height adds 2 m to platform height. U.S. adds 6 ft to platform height.  
 \*\* Gradeability applies to driving on slopes. See Operator's Manual for details regarding slope ratings.  
 \*\*\* Tongue weight will vary depending on options  
 \*\*\*\* Weight will vary depending on options and/or country standards.

## Features

### EASILY CONFIGURED TO MEET YOUR NEEDS

#### PLATFORM OPTIONS

- Aluminium 68 cm x 1.12 m (26.8 x 44 in) platform
- 160° hydraulic platform rotation

#### POWER OPTIONS

- 24 V DC power source
- Hybrid Honda 5.5 hp (4.1 kW) 45 amp charging system

#### DRIVE

- Drive option

#### COUPLER

- 50 mm ball coupler

#### TYRES

- 215 R14C tyres

### STANDARD FEATURES

#### MEASUREMENTS

- 17.09 m (55 ft 6 in) working height
- 8.89 m (29 ft 2 in) horizontal reach
- Up to 200 kg (440 lb) lift capacity

#### PRODUCTIVITY

- Industry leading working envelope
- Extension boom
- Self-levelling platform
- 1.25 m (4 ft) jib with 135° working range
- AC wiring to platform
- Hydraulic outriggers
- Automatic 11° levelling system
- Outrigger interlocks
- Mechanical parking brake
- Hydraulic surge brakes
- Auxiliary pump down
- Dual jockey wheels
- 359° non-continuous turntable rotation
- Easy to access batteries
- Hour meter
- Tilt alarm / sensor
- Illuminated outrigger indicators
- Certified load sensor
- Wheel chocks
- Spare tyre
- Battery charge indicator (BCI)
- Descent alarm
- Automatic battery charger

#### POWER

- 24 V DC (four 6V 225 Ah batteries) power source



### OPTIONS & ACCESSORIES

#### PRODUCTIVITY

- 160° hydraulic platform rotation
- Drive option with larger 244 Ah batteries pack
- Fluorescent tube caddy\*
- Operational warning beacon package
- Low temperature cut-out module
- Non-marking outrigger footpads
- Tool tray
- Bicycle guard\*\*

#### POWER

- Hybrid Honda 5.5 hp (4.1 kW) 45 amp charging system option

\* Available aftermarket only

\*\* Standard in The Netherlands, France, Denmark

#### Enquiries from Europe:

Tel: +31 165 519 361

Fax: +31 165 511 148

Email: AWP-InfoEurope@terex.com

#### Offices:

##### France

Tel: +33 (0)2 37 26 09 99

Fax: +33 (0)2 37 26 09 98

##### Germany

Tel: +49 (0)4221 491 810

Fax: +49 (0)4221 491 820

##### Spain

Tel: +34 93 572 50 90

Fax: +34 93 572 50 91

##### Scandinavia

Tel: +46 31 57 51 00

Fax: +46 31 57 51 04

##### The Netherlands

Tel: +31 165 519 361

Fax: +31 165 511 148

##### UK

The Maltings

Wharf Road

Grantham NG31 6BH

UK

Tel: +44 (0)1476 584333

Fax: +44 (0)1476 584334

##### Middle East

Tel: +971 4 399 0381

Fax: +971 4 399 0382

Email: AWP.Infome@terex.com

##### Russia & CIS countries

Tel: +7 495 660 32 30

Fax: +7 495 660 32 29

Email: info@terexrus.ru

#### Corporate Headquarters:

##### United States

18340 NE 76th Street

P.O. Box 97030

Redmond, WA

USA 98073-9730

Tel: +1 425 881-1800

Fax: +1 425 883-3475

#### Distributed By: